



2013/2014 - City of Calipatria Street Improvements Projects

The City of Calipatria acknowledges the California Department of Resources Recycling and Recovery (CalRecycle) for helping to fund improvement of streets in Calipatria. Other funding for these projects are from the State Local Partnership Program (SLPP), the Congestion Mitigation and Air Quality (CMAQ) Improvement Program and the Local Transportation Authority (LTA).

CalRecycle provides the Rubberized Pavement Grant Program to promote markets for recycled-content surfacing products derived from waste tires generated in California and decreases the adverse environmental impacts created by unlawful disposal and stockpiling of waste tires. Rubberized Asphalt Concrete (RAC) is a proven road paving material that has been used in California since the 1970s. It is made by blending ground tire rubber with asphalt binder which is then mixed with conventional aggregate materials.

In 2013, CalRecycle awarded \$140,306.00 in RAC grant funds to the City of Calipatria for improvements of streets in Calipatria. The City of Calipatria completed rehabilitation of streets beginning mid-September 2013 and ending mid-November 2015 as a part of the 2013/2014 City of Calipatria Street Improvements Projects. The City installed new rubberized hot mix asphalt pavement surfaces at the following locations:

- Lake Avenue between Elder Street and Bowles Road;
- Imperial Avenue between Main Street and Date Street;
- International Boulevard between Delta Street and Main Street;
- Fern Street between International Boulevard and SR 111;
- Bonita Place between Brown Avenue and Commercial Avenue; and
- Railroad Avenue between Main Street and Date Street

A total of **13,096** Passenger Tire Equivalent (PTE) of waste tires were recycled into the roadway pavement at the locations indicated above.

External Links

For more information about used tire and other recycling, please visit the website:

<http://www.calrecycle.ca.gov/>

LAKE AVENUE
From Elder Street to Bowles Road

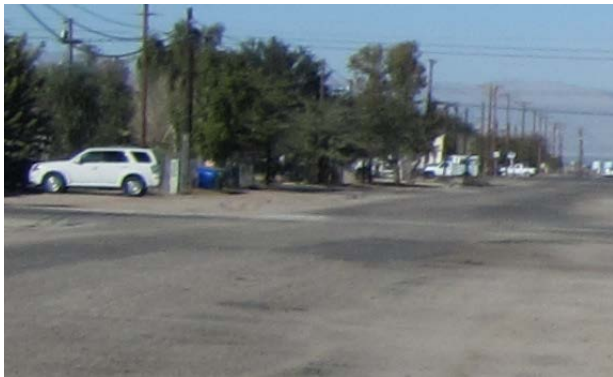


(Before)



(After)

IMPERIAL AVENUE
From Main Street to Date Street



(Before)



(After)

INTERNATIONAL BOULEVARD
From Delta Street to Main Street



(Before)



(After)

BONITA PLACE
From Brown Avenue to Commercial Avenue



(Before)



(After)

FERN STREET
From International Boulevard to State Route Highway 111



(Before)

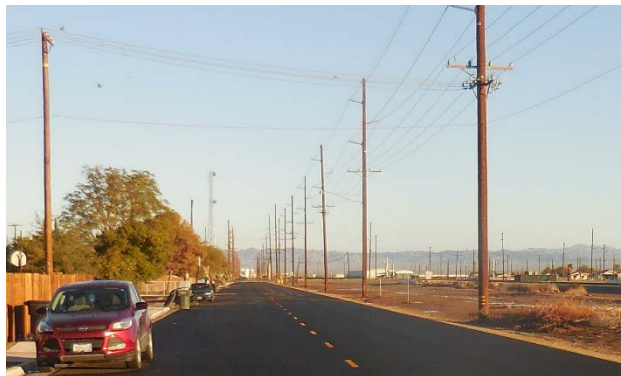


(After)

RAILROAD AVENUE
From Main Street to Date Street



(Before)



(After)